



DECIBELLE



DESIGNER ACOUSTIC PANELS

WHO WE ARE

AIM, a leading interior decor company, has launched its DECIBELLE- Designer Acoustic Panels, which are Acoustic Non - Woven Polyester Fiber Panels, made from high quality polyester fiber, perfect for acoustic insulation in homes, offices, and public spaces like restaurants and conference halls.

WHAT WE OFFER

Our experience in the industry has enabled us to stay ahead of the curve, providing innovative products that meet the current market demand, with Decibelle Designer Acoustic Panels being a testaments to our commitment.

WHY DECIBELLE

DECIBELLE is a collection of Designer Acoustic Panels which are versatile and customizable, available in a range of colors and patterns, allowing customers to tailor them to their specific design needs. Their easy installation process makes them suitable for any surface, including walls and ceiling, making them a popular choice.

PRODUCT FEATURES



High Performance
NRC 0.85-0.9



Highly Versatile
Cut to desired shape/size



High resistance to
Humidity & Moisture



Easy installation
& Maintenance



& Flexible
& Light Weight



It is made from
Polyester Fiber

For anyone looking to enhance their space's acoustic performance while still maintaining its aesthetic appeal, Decibelle -Designer Acoustic Panels are the perfect choice.

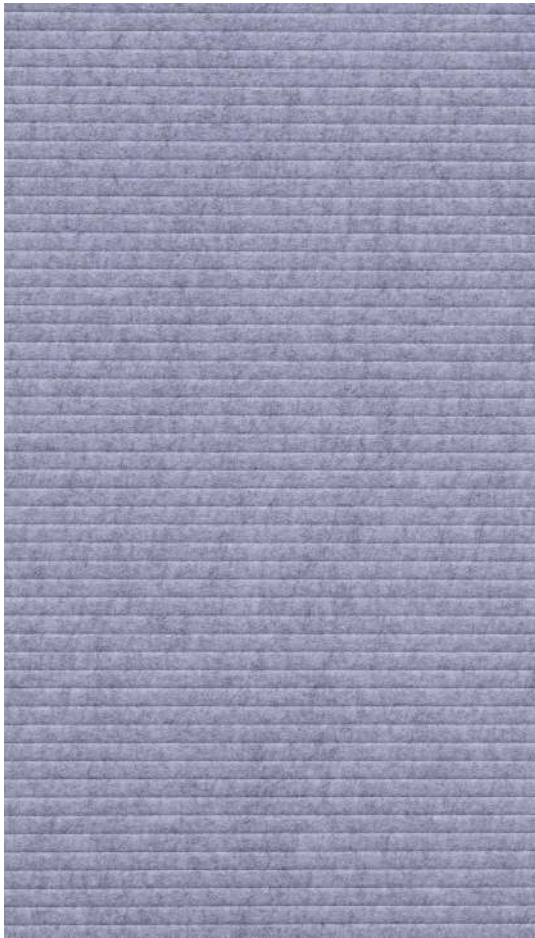


501 - CC02

Marble

501 - CC02

Marble



Product Specification :

Dimension 2440 x 1220mm

Thickness 10mm

502 - CC06

Charcoal



Product Specification :

Dimension 2440 x 1220mm

Thickness 10mm



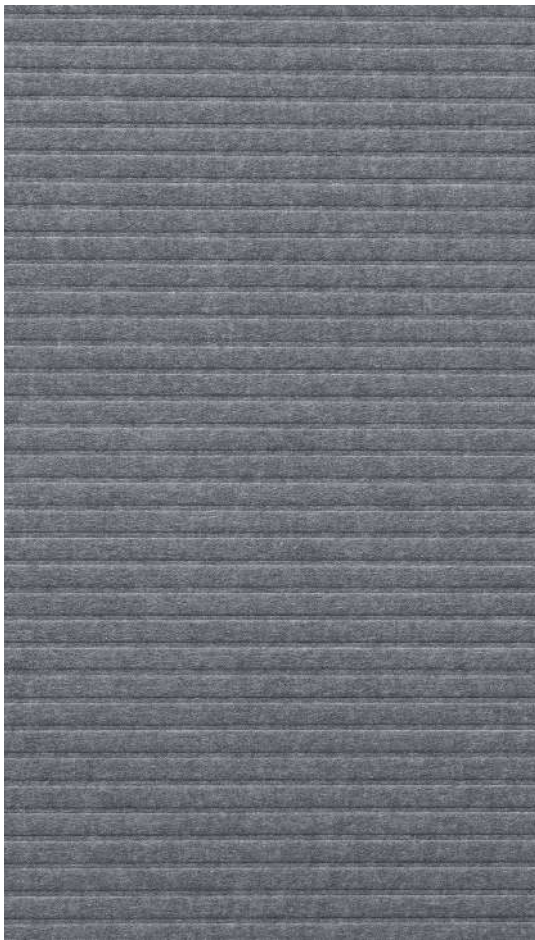
502 - CC06
Charcoal



503 - CC03
Slate Grey

503 - CC03

Slate Grey



Product Specification :

Dimension 2440 x 1220mm

Thickness 10mm

504 - CC25

Banana Green



Product Specification :

Dimension 2440 x 1220mm

Thickness 10mm



504 - CC25
Banana Green



505 - CC31

Yellow

505 - CC31

Yellow



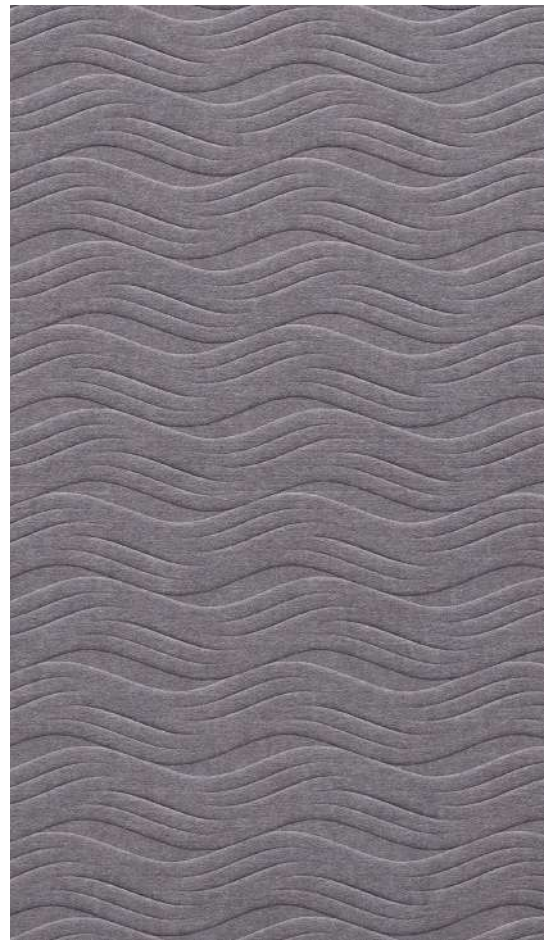
Product Specification :

Dimension 2440 x 1220mm

Thickness 10 mm

506 - CC10

Dark Beige



Product Specification :

Dimension 2440 x 1220mm

Thickness 10mm



506 - CC10

Dark Beige



507 - CC40

Coral Pink

507 - CC40

Coral Pink



Product Specification :

Dimension 2440 x 1220mm

Thickness 10mm

508 - CC11

Natural



Product Specification :

Dimension 2440 x 1220mm

Thickness 10mm



508 - CC11
Natural

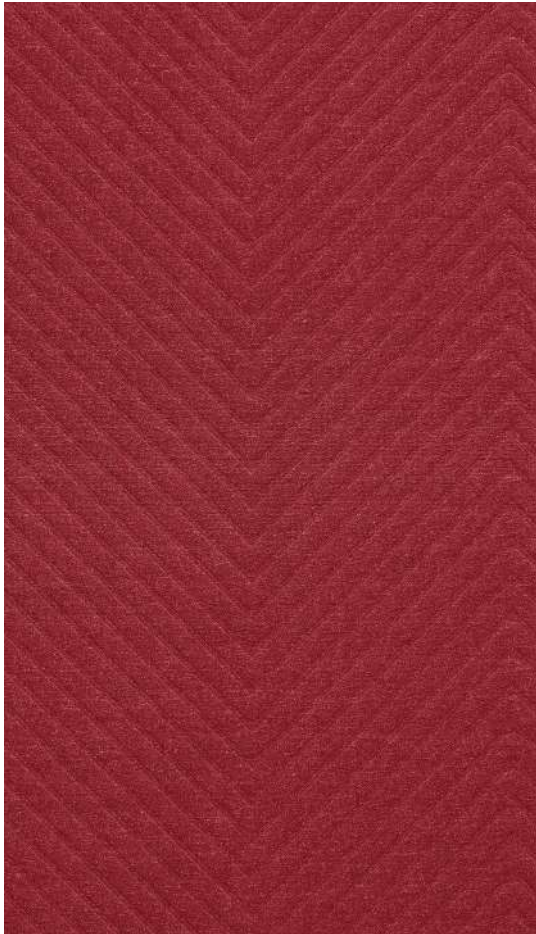


509 - CC36

Maroon

509 - CC36

Maroon



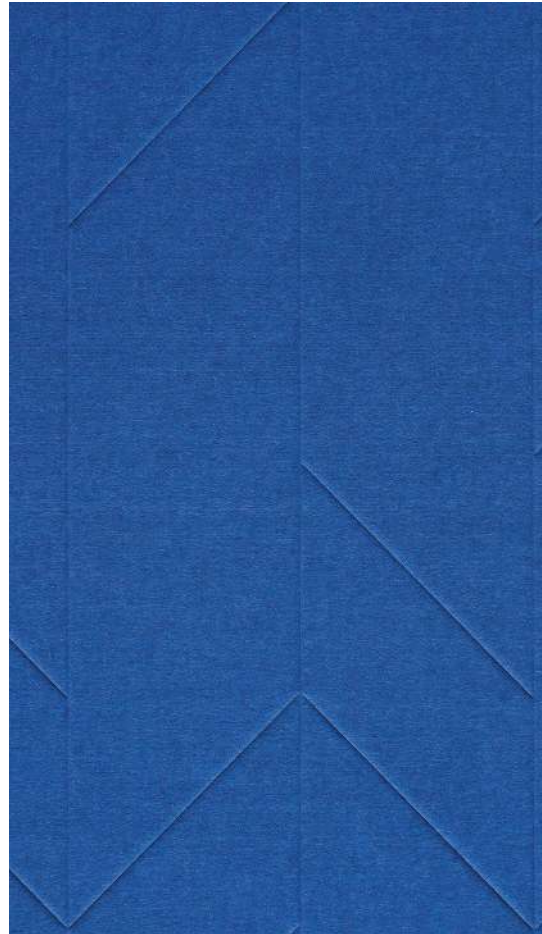
Product Specification :

Dimension 2440 x 1220mm

Thickness 10mm

510 - CC21

Teal Blue



Product Specification :

Dimension 2440 x 1220mm

Thickness 10mm



510 - CC21
Teal Blue

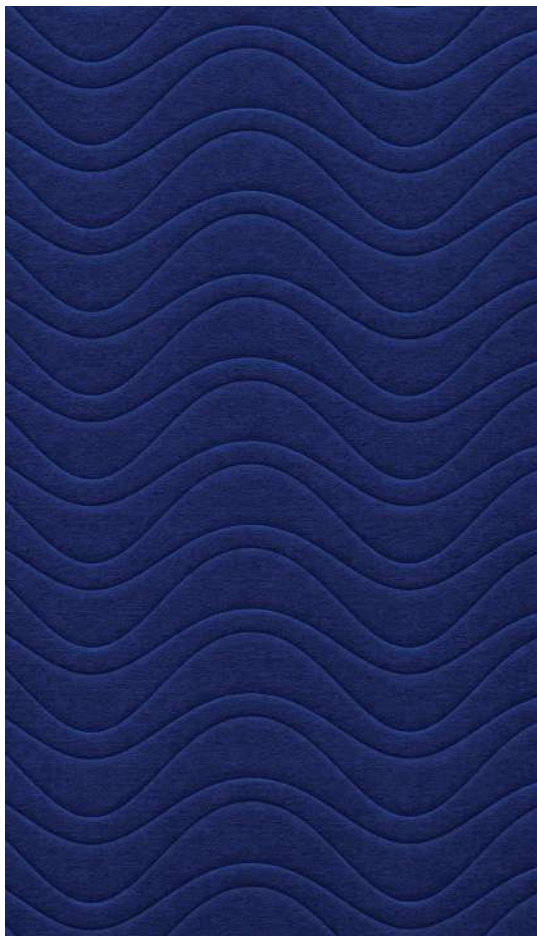


511 - CC23

Dark Blue

511 - CC23

Dark Blue



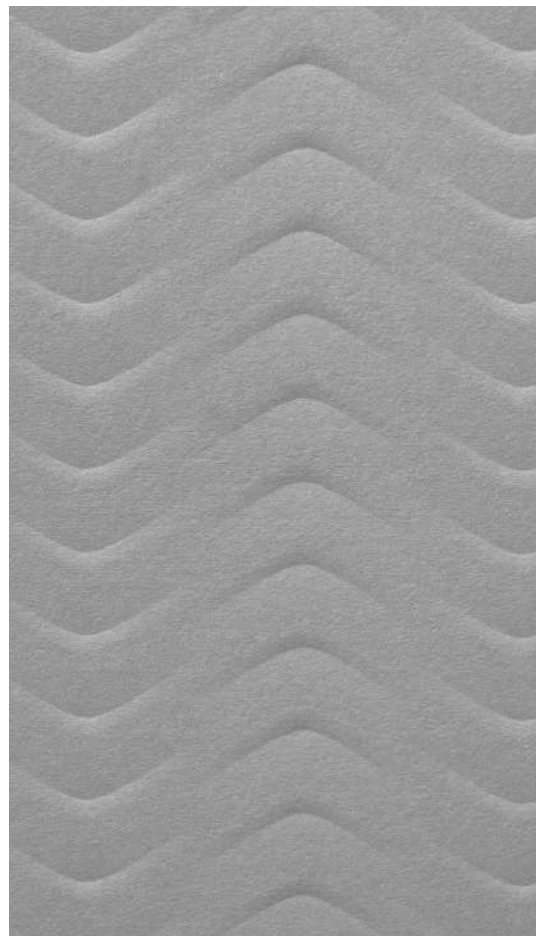
Product Specification :

Dimension 2440 x 1220mm

Thickness 10mm

512 - CC04

Grey



Product Specification :

Dimension 2440 x 1220mm

Thickness 10mm



512 - CC04

Grey



513 - CC08

Black

513 - CC08

Black

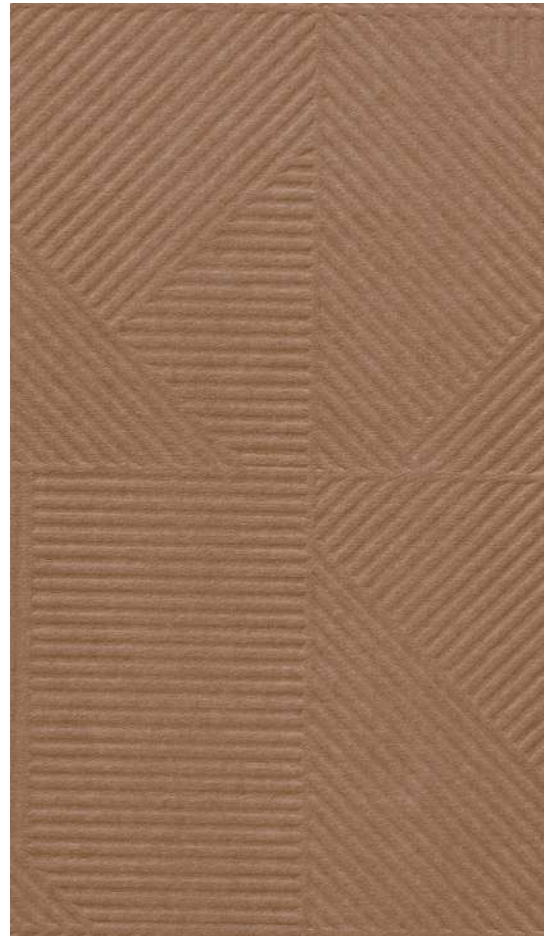


Product Specification :

Dimension 2440 x 1220mm
Thickness 10mm

514 - CC14

Brown



Product Specification :

Dimension 2440 x 1220mm
Thickness 10mm



514 - CC14
Brown

COLOUR OPTIONS



Dark Blue
CC23



Teal Blue
CC21



Maroon
CC36



Coral Pink
CC40



Yellow
CC31



Dark Beige
CC10



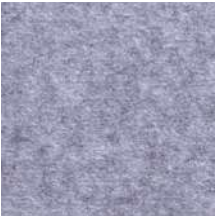
Natural
CC11



Brown
CC14



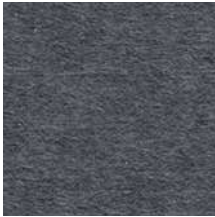
Banana Green
CC25



Marble
CC02



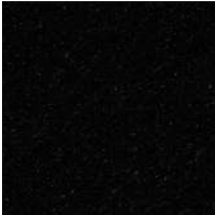
Slate Grey
CC03



Grey
CC04



Charcoal
CC06



Black
CC08

All of these colors are also available for our non-textured acoustic sheets.

Please note - There may be variations in colors between the photographs and the actual product.

INSTALLATION GUIDELINES

Acoustic panels are a popular choice for improving the acoustics of a room. They are easy to insytall and can help reduce unwantednoise, echoes, and reverberation. Here's a step-by-step guide on how to install these panels.

STEP 1 : PREPARE THE SURFACE

Before installing the panels, make sure the surface is clean and free of dust or debris.

STEP 2 : CUTTING AND TRIMMING

Use a measuring tape to determine the size and shape of the panel you need. Using a sharp paper cutter, utility knife or scissors, carefully cut the panel. Make sure to apply enough pressure to cut through the panel without damaging it.*necessary, use sandpaper or a file to smooth out any rough edges or uneven cuts.*

STEP 3 : ADHESIVE

Apply a layer of adhesive to the back of the panel using a roller. Make sure to spread the adhesive evenly over the entire surface of the panel. *use a (Silicone) adhesive to stick things onto a wall, and a high-strength adhesive (SR 505) on plywood or MDF.*





info@aimply.co.in